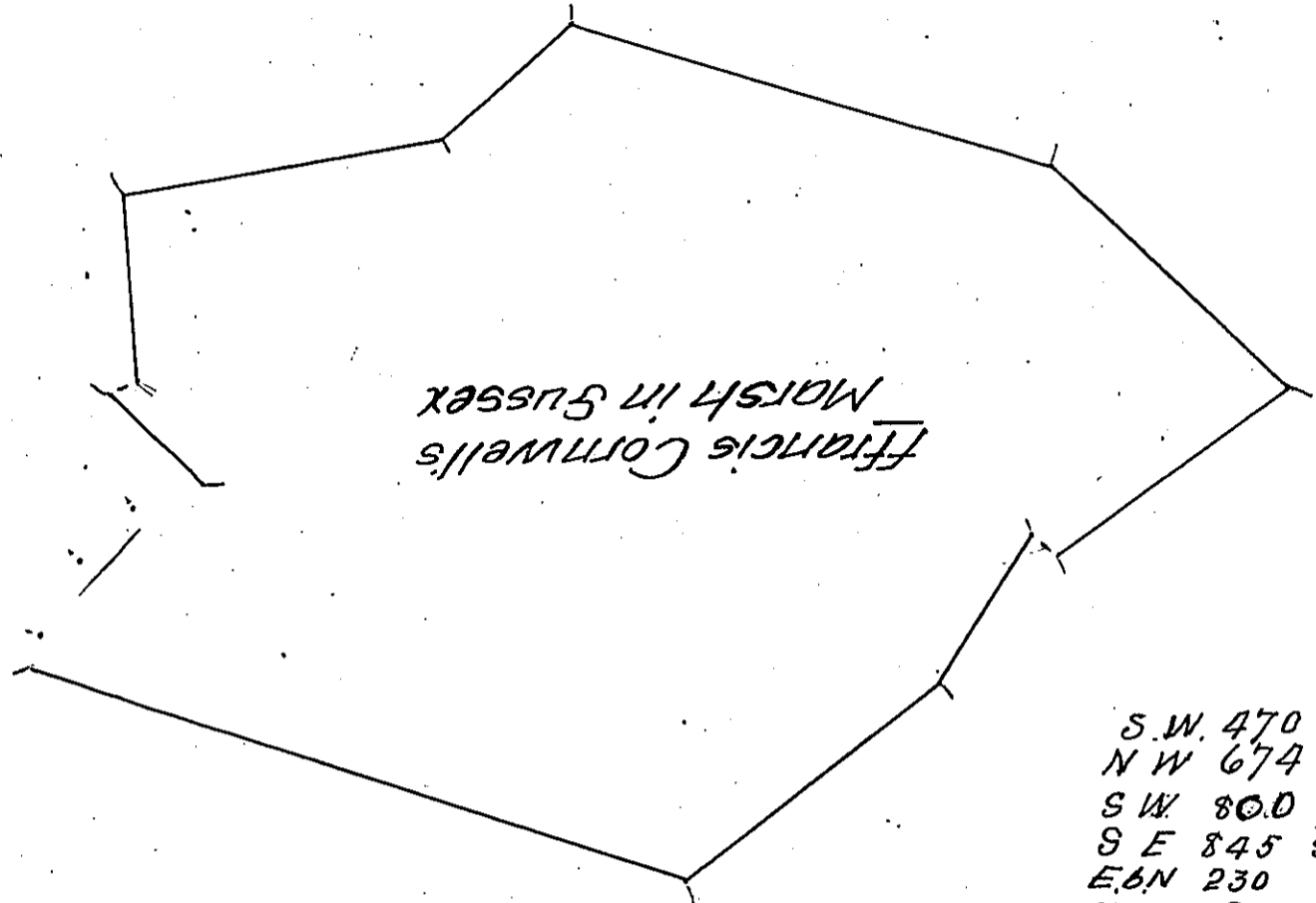


4
4
4
4

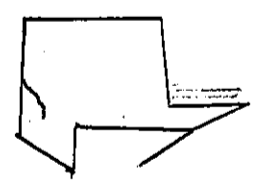


Francis Cornwells
Marsh in Sussex

S.W. 470 post cr.
N.W. 674 Hick
S.W. 800 post
S.E. 845 S.W.E
E.B.N 230
N.W. 80
N.E. 570
310

Stilly, Carter, Wheeler,
Banks 017
Pascal R Fleece

No four Hundred fifty
J.B. Hughes
N.S.



116
465.9
15635
840
3216
14280
1260
1680
68
210

63
136
23

3615
185
1666
19
185

120
7
940

185
9291
136